



more products  
more solutions

# TYRE STORAGE SOLUTIONS

Vertical or Horizontal Storage of Automotive Tyres



Storage solutions since 1947

more expertise



Successfully completing the Achilles programme and achieving the accreditation reiterates our dedication to providing quality products, services, compliance and commitment to our customers increasing demands regarding health and safety, environmental and corporate governance.



We are the largest distributor of Dexion in the UK. Our planning and installation teams are recognised as experts in the industry.



**"HIGHLY COMMENDED"**  
QUALITY ASSURANCE SCHEME AUDIT 2014

As a SEMA distributor company we work to the latest industry standards and codes of practice. We are one of a handful of companies in the UK able to offer independent SEMA approved pallet rack inspections.



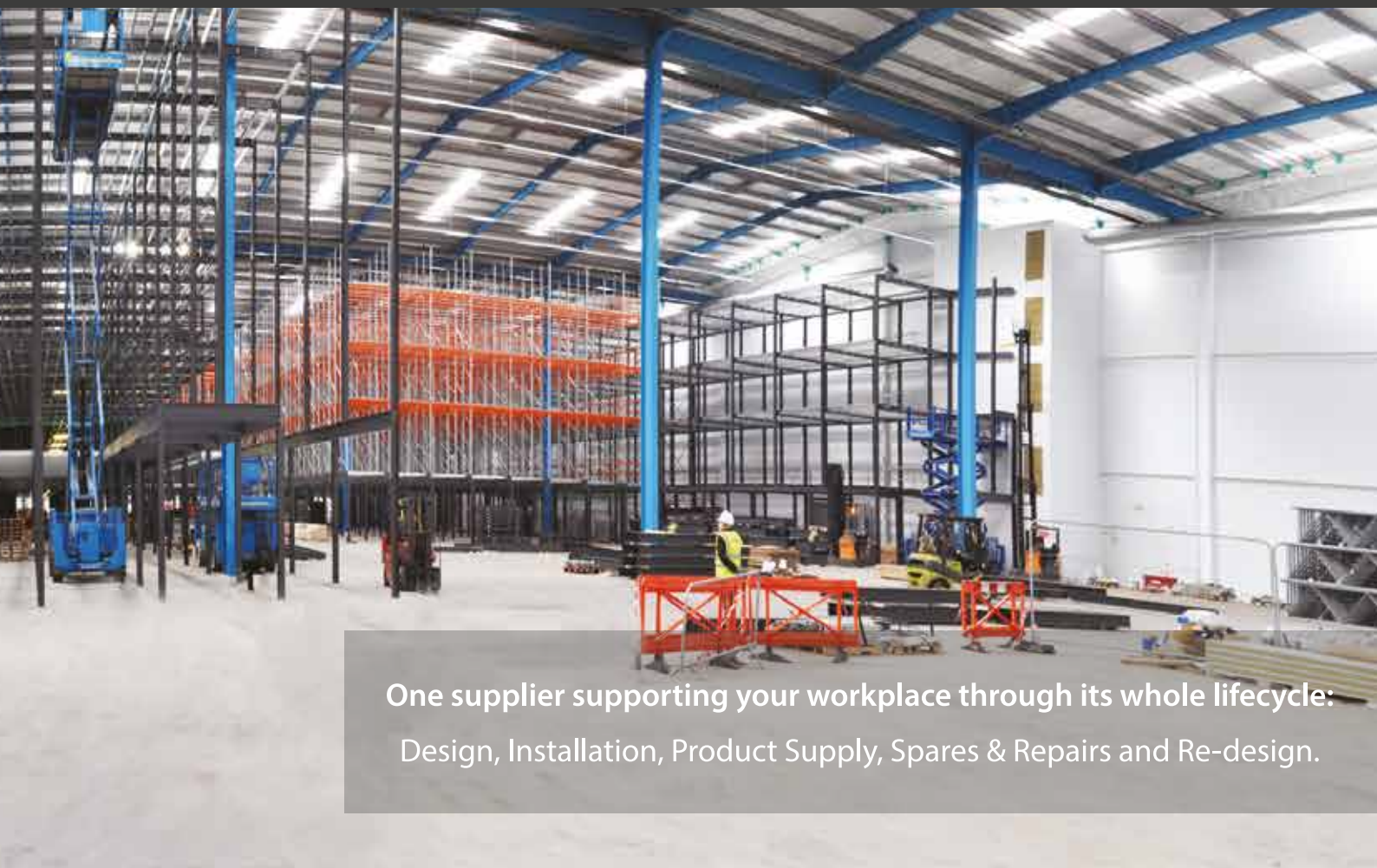
Prince's Trust

At CSI we are proud to support The Prince's Trust in their great efforts to support young people into work and training. To help raise funds we donate £1 for every order placed on our website.



As a BSI member we have achieved ISO9001 for over 10 Years.





One supplier supporting your workplace through its whole lifecycle:  
Design, Installation, Product Supply, Spares & Repairs and Re-design.

CSI is the workplace product and solutions provider that gives you more.

*We offer our customers **more for** their workplace so they can get **more from** their workplace.*

CSI has been built on the 35 year reputation of trading as ESE, one of the largest industrial storage companies in the UK. Our e-commerce division has transformed our brand into a “more” company for industrial and commercial products and solutions.

*We offer a supportive working dynamic - Whatever it is that you are in the business to do, we're in business to help you do it.*

## more for you

- » The best products and solutions at the best prices.
- » Delivering efficiency, safety and return on investment.
- » 15,000 Products online designed for the industrial and commercial workplace.
- » Combined expertise and experience of our solutions and products teams.
- » Customer service, before, during and after sales.
- » Help to unlock, realise and release the potential within your workplace.

**there's more to every workplace**





**"Our tyre storage solutions are all about storage efficiency, quality and ergonomics"**

## THINKING INSIDE THE BOX

### **Increasing warehouse efficiency by Thinking Inside the Box**

By "The box" we specifically mean your warehouse. Our broad ranges of storage solutions have one thing in common; robustness and adjustability, which allows us to provide your business with efficient solutions, perfectly fitted for your exact requirements. You can rest assured that we will find an efficient solution that meets your current needs – which is equally easy to adjust for your future needs.

[info@csigroup.info](mailto:info@csigroup.info)

[www.csigroup.info](http://www.csigroup.info)

telephone 01506 413 313

### **Customising your warehouse**

Contact us, and we will start thinking inside your box to develop the customised, variable storage solution for you.



## A perfect fit for any tyre storage

### Index

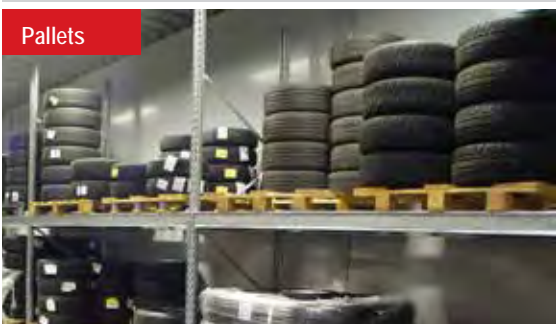
HI280 Shelving	p. 04
Longspan Shelving	p. 05
HI280 Mobile Shelving	p. 06
P90 Pallet Racking	p. 08
MOVO Mobile Racking	p. 10
P90 Tyre Rack	p. 12
Handling Equipment	p. 13
References	p. 14
Warehouse Safety	p. 15
C-WIS Warehouse Optimisation	p. 15

Optimal storage of tyres is about obtaining the maximum amount of tyre storage in the available space without affecting the quality of the tyre – while ensuring efficient and ergonomic handling, through all seasons.

The basic layout of a warehouse is often already set, so this very much decides the storage solution you choose. However, it still needs to be flexible enough to precisely fit whatever height, depth and width is available.

And this is what our products are designed for. Standardised components are assembled into a tailor-made solution – easy to install, durable in use, and easy to adjust and readjust again.

Thereby the variety of applications is almost endless – from a small shelving system for a local “used car dealer” to an automated high-rise rack installation for the international tyre manufacturer.



### Quick assembly

Standardised components guarantee uncomplicated assembly. Accessory parts are simply placed in or hung on afterwards.

### Maximum stability

Due to the robust construction and high quality workmanship, even exceptional heights, depths and load-bearing capacities are no problem.

### Durability

All surfaces, inner and outer, are zinc-galvanised or epoxy painted to guarantee the durability of the components.

### Guaranteed future-proof

Thanks to the modular and robust construction, there are no problems either in removal or in rebuilding.

# Highly adaptable stationary storage

## HI280 Shelving Organised tyre storage

The HI280 shelving system is ideal for smaller warehouses with manual handling. The basis of the system is uprights and shelves made from high-grade pre-galvanized steel. These can be assembled in many different ways. Tyres without wheel rims can be stored

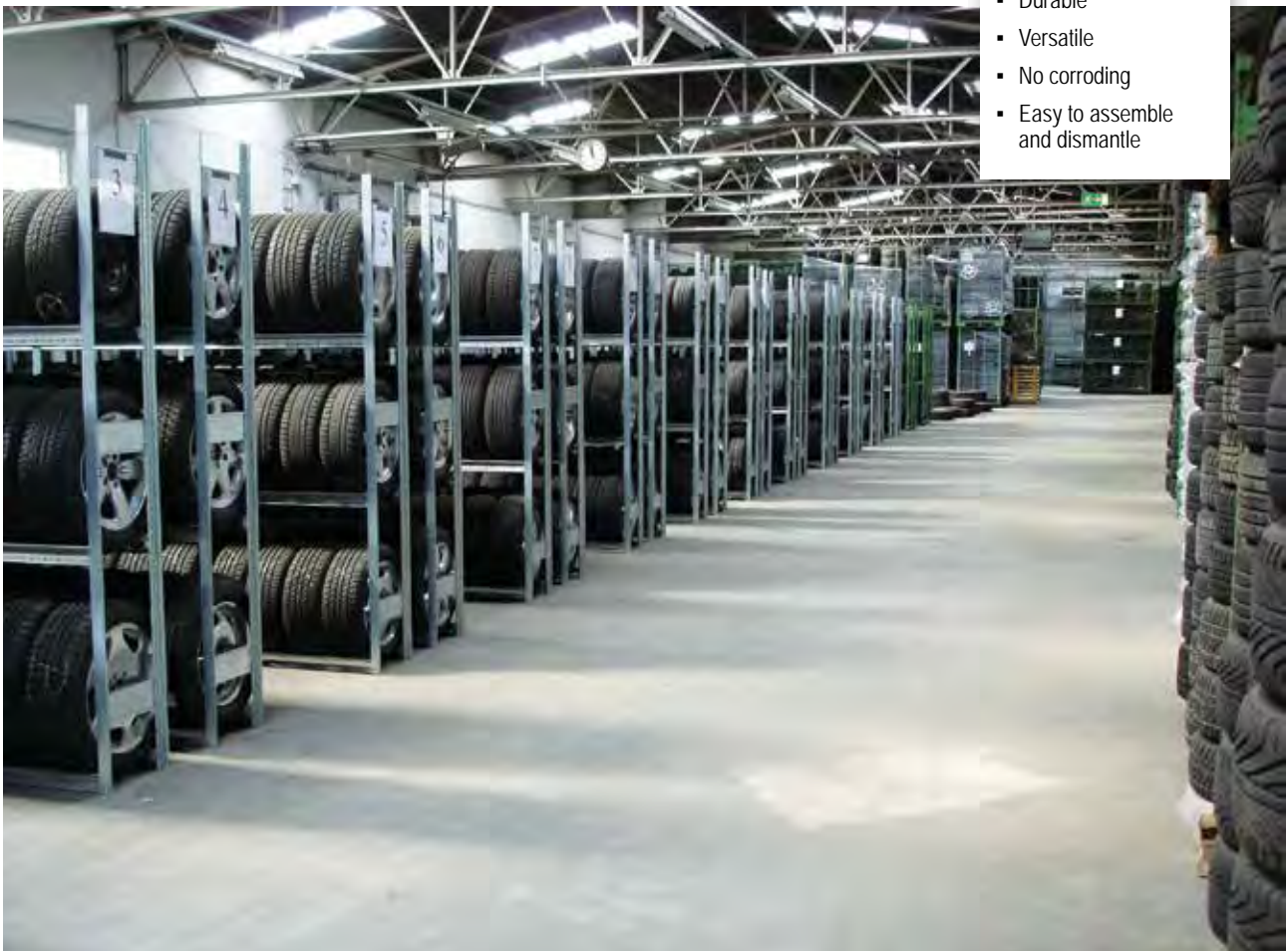
vertically, providing a higher storage density than piles of tyres on the floor and frees up floor space. Even tyres on rims can be stored like this for short periods, such as for seasonal storage. These medium-span tyre racks – with spans of up to 2 metres – can be very effective in small spaces.

### HI280



- ✓ Saving time
- ✓ Saving space
- ✓ Saving costs

- Manual handling
- Vertical storage
- Durable
- Versatile
- No corroding
- Easy to assemble and dismantle



More information see:  
[www.dexionstore.co.uk](http://www.dexionstore.co.uk)



# Longspan Shelving

## high density storage

With longer shelf spans and fewer uprights plus the possibility to have double deep tyre storage, the longspan system can store more tyres in the same space, compared to traditional shelving, thereby increasing the storage density. Due to the solid and stable design you can store not just tyres but tyres with rims as well. If you have a building with sufficient height, the longspan shelving can be configured into a multitier installation, drastically increasing the available space.

The Dexion longspan system is easy to install, adapt and to expand with your changing requirements.

With a wide range of beam types and sizes, we can provide you with a solution that maximises the utilisation of your space.



### LONGSPAN



- ☒ Saving time
- ☒ Saving space
- ☒ Saving costs

- Long spans
- double deep
- Manual handling
- Vertical storage
- Versatile
- Easy to assemble and dismantle

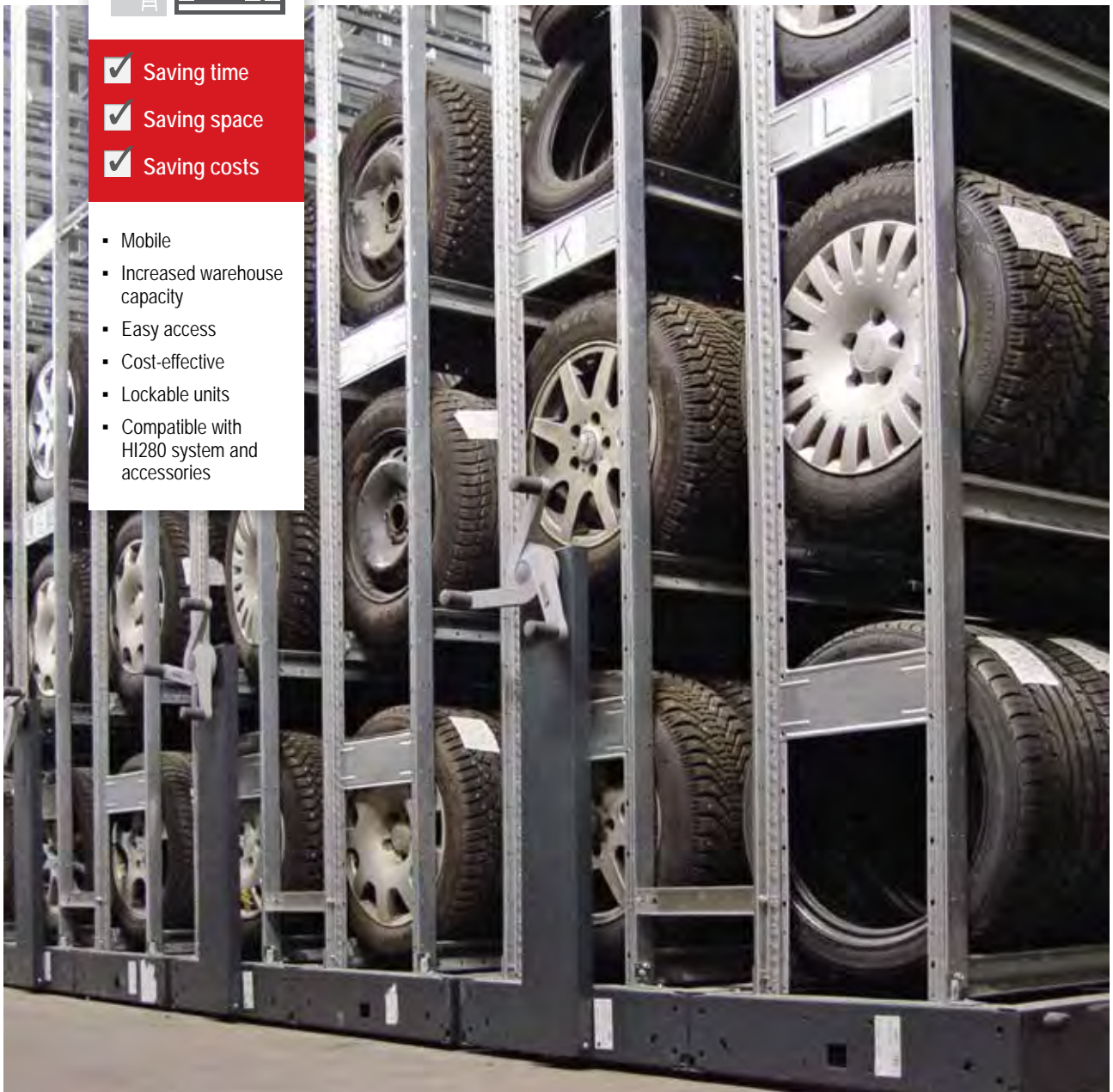
# Increasing capacity with mobile shelving

## HI280 MOBILE



- ✓ Saving time
- ✓ Saving space
- ✓ Saving costs

- Mobile
- Increased warehouse capacity
- Easy access
- Cost-effective
- Lockable units
- Compatible with HI280 system and accessories



More information see:  
[www.dexion.co.uk/Tyre-Mobile](http://www.dexion.co.uk/Tyre-Mobile)



The HI280 shelving system can be mounted on mobile units to create the optimal, compact tyre storage system. Mobile tyre racks significantly increase the storage space compared to traditional methods and although the investment is higher, it is often seen as an inexpensive alternative to an expensive warehouse extension. This system is ideal when floor space is limited or rates per m<sup>2</sup> are high.

It can also create very secure storage as the mobile units can be locked and access given only through a key or electronic code.



# Large scale bulk storage with P90 racking



## P90



- ✓ Saving time
- ✓ Saving space
- ✓ Saving costs

- Fast access
- Pallet storage handling
- Adjustable
- Durable
- No corroding
- Easy to assemble and dismantle
- Multifunction
- Compatible with the MOVO system

In batch storage, many tyres of the same kind – e.g. winter tyres – are stored in bulk on pallets and only taken down mechanically and split for handling into smaller amounts when needed. Pallet rack storage is efficient, since it utilises the height as well as the width and depth of the space available. Pallets stored in wide aisle racking are freely accessible at all time, with no restrictions to layout.

Our P90 pallet racking system is very versatile, available in heights up to 30 metres, with varying depths and widths. It can be assembled as single or double depth racks.



More information see:  
[www.dexionstore.co.uk](http://www.dexionstore.co.uk)





# Mobile bulk storage solution

## MOVO



- ✓ Saving time
- ✓ Saving space
- ✓ Saving costs

- Easy access
- Saves space
- Increased storage capacity
- State-of-the-art technology
- Variable control options
- Compatible with P90 system and accessories

By mounting pallet racks on mobile bases, you can increase a system's storage capacity while maintaining access to the stored goods; this is the advantage of the MOVO mobile racking system.

The electronically controlled MOVO heavy-duty mobile racking system runs on embedded rails and can carry bay loads of up to 24 tons at racking

heights of up to 12 metres. A choice of control options ensure ease of use and when the individual aisles are open, state-of-the-art sensor technology guarantees absolute safety.

The MOVO system is ideal wherever a large amount of tyres need to be stored, such as in a manufacturer's warehouse or the main distribution centre of a tyre fitting company or wholesaler.



More information see:  
[www.dexionstore.co.uk](http://www.dexionstore.co.uk)





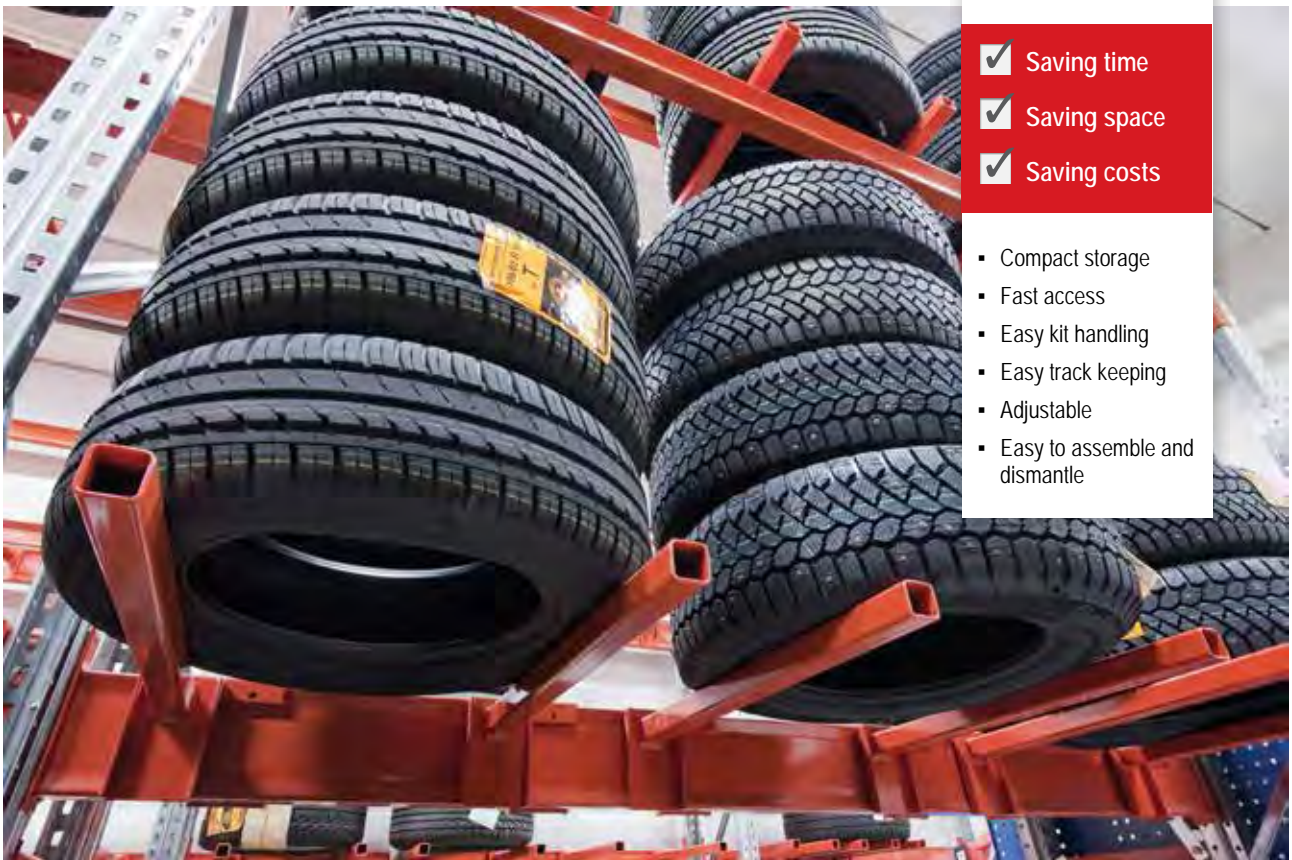
# Easy tyre handling with Tyre-Racks

## TYRE RACKS



- ✓ Saving time
- ✓ Saving space
- ✓ Saving costs

- Compact storage
- Fast access
- Easy kit handling
- Easy track keeping
- Adjustable
- Easy to assemble and dismantle



P90 Tyre Rack is suitable for the storage of nearly all car and van tyres. Due to the modular design of the tyre rack the storage space can be fully utilised.

Four tyres from one vehicle are placed horizontally and built up into a stack, they are then put away and stored on the arms of the tyre rack. This solution provides easy handling, storage and retrieval of all the tyres for one vehicle.



More information see:  
[www.dexionstore.co.uk](http://www.dexionstore.co.uk)





# Handling equipment

While the aim is to optimise your tyre-storage solution, there are also several handling solutions to consider. To achieve an ergonomic work-environment you need to be sure to match the handling equipment to your particular needs and to ensure it works suitably with the storage system. The following equipment is suitable for handling tyres.

## Work assist vehicle

A Work assist vehicle is suitable for the manual handling of tyres into and out of the racks.



## Scissor lift

Scissor lift for working at heights, handling tyres manually in and out of racks.



## Tyre cart

Tyre cart for manual handling of any tyre size – small or large. Used to transport sets of 4 tyres.



## Pedestrian stacker

Pedestrian stacker for handling tyres either when stored on pallets or in the special P90 Tyre Rack.



## Reach trucks and narrow aisle trucks

When tyres are stored on pallets or inside containers, reach trucks and Narrow aisle trucks ensures an easy and safe storage.



More information see:  
[www.dexionstore.co.uk](http://www.dexionstore.co.uk)

	Work assist vehicle	Scissor lift	Tyre cart*	Pedestrian stacker	Reach/Narrow aisle truck
HI280 Shelving	✓	✓	✓		
HI280 Mobile Shelving	✓	✓	✓		
P90 Pallet Racking			✓	✓	✓
MOVO Mobile Racking			✓	✓	✓
P90 Tyre Rack			✓	✓	✓

\* Suitable for handling tyres on the floor

# pallet rack inspections

Regular rack inspections help to minimise the number and severity of warehouse accidents. Our rack inspectors offer a comprehensive, convenient and cost effective way to keep your warehouse safe and compliant with Health & Safety regulations.

Over the year, moving goods, modifying the configuration and general knocks through daily use can cause changes in the capacity of your racking and potentially lead to accidents - a risk to both man and material.

Qualified Inspectors can spot these changes early and help eliminate and reduce future costs.

Our SEMA Approved Rack Inspectors carry out comprehensive annual inspections. Providing you with detailed reports offering professional advice and highlighting areas that require attention, immediately or in the near future, through an easy to understand traffic light scoring system.

Inspections comply with all government legislation and industry guidelines.



Our rack inspectors are **SEMA**  
(Storage Equipment Manufacturers Association)  
approved and hold the **SARI** certificate



- » Comprehensive professional inspection by SEMA Approved Rack Inspectors (SARI)
- » Experienced Inspectors certified to SEMA standards
- » Independent expert to assess your equipment
- » Detailed inspection report
- » No interruption to operations
- » Early risk discovery minimises future repair costs
- » Prevention of damage to people or goods
- » Extending lifespan of facilities

To arrange an inspection  
**CALL US NOW ON 01506 413 313**  
or visit us at **[csigroup.info/racksafety](http://csigroup.info/racksafety)**

## Annual Inspections

No need to remember when your next inspection is due, our rack inspection team will contact you to remind you when you next need an inspection carried out.

**DAMAGED UPRIGHTS PROVIDE  
HAZARDOUS CONDITIONS**



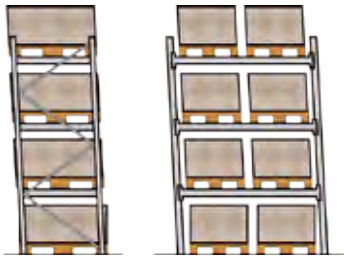
**FAILURE TO INSPECT CAN LEAD TO A  
RACK COLLAPSE**



**RACKS AT ALL HEIGHTS  
NEED TO BE INSPECTED**

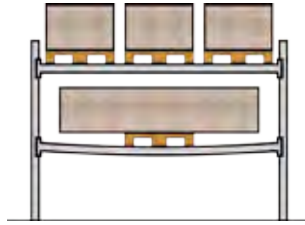






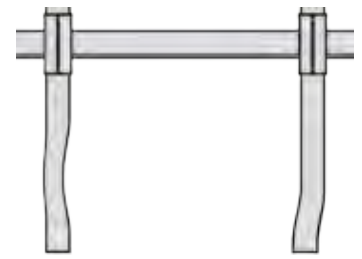
#### INCLINATION

Maximum inclinations for both empty and fully loaded racks should not be exceeded.



#### LOAD WEIGHT & PLACEMENT

The weight of the load must not exceed max weight capacity or be misplaced.



#### DEFORMATION

Even slightly bent beams and uprights can be a sign of potential danger. Beams and uprights must always be replaced.

We are a **SEMA DISTRIBUTOR COMPANY** and were delighted to be awarded the *Highly Commended status* in our latest audit.

*"The SEMA Distributor Company (SDC) qualification indicates that the company is dedicated to the supply of quality storage equipment. To become part of the SEMA Distributor Group (SDG) the company must demonstrate a high level of commitment to safety standards, work to industry codes of practice and be regulated by a random audit"*



**"HIGHLY COMMENDED"**

QUALITY ASSURANCE SCHEME AUDIT 2014

# Legislation

**Maintaining rack safety is not simply an important warehouse practice: it is a legal obligation.**

Under the **Workplace (Health, Safety and Welfare) Regulations of 1992** and the **Provision and Use of Work Equipment Regulations (PUWER) of 1998**, employers are legally required to inspect their work equipment, including all pallet racking.

This means that any business with even as little as one bay of racking is required to carry out regular SEMA-approved examinations.

Racking should be inspected on a regular basis and should be carried out in accordance with SEMA Guidelines No.6 - Guide to the Conduct of Pallet Racking and Shelving Surveys.

The frequency of inspections depends on a wide variety of factors that are particular to the site, however the first inspection should be carried out within 6 months of the installation becoming operational and thereafter at a maximum of 12-month intervals. Records of these inspections must be maintained.

## LEGISLATION

### HEALTH & SAFETY AT WORK ACT 1974

- » **Section 2:** Duties of the Employer
- » **Section 7 & 8:** Duties of Employees

### MANAGEMENT OF HEALTH & SAFETY AT WORK REGULATIONS 1999

- » **Regulation 3:** Risk Assessment
- » **Regulation 11:** Capabilities and Training

### PROVISION AND USE OF WORK EQUIPMENT REGULATIONS 1998 (PUWER)

- » **Regulation 5:** Maintenance
- » **Regulation 6:** Inspection
- » **Regulation 22:** Maintenance Operations

there's more to every workplace

**Complete Storage and Interiors Ltd**

**HEAD OFFICE  
ABERDEEN**

3 Dunlop Court Deans Industrial Estate Livingston EH54 8SL  
Westpoint House Prospect Road Arnhall Business Park Aberdeen AB32 6FJ  
E: [info@csigroup.info](mailto:info@csigroup.info) W: [csigroup.info](http://csigroup.info)

**T: 01506 413 313  
T: 01224 912 762**



visit us online at  
[csi-products.co.uk](http://csi-products.co.uk)

**ways to order**

